



COMMUNITY
RESILIENCE PARTNERSHIP



GOVERNOR'S OFFICE OF
Policy Innovation and the Future

Committee on Marine Resources - January 11, 2022

Sarah Curran
Deputy Director, Climate Planning & Community Partnerships

Brian Ambrette
Senior Climate Resilience Coordinator

Maine's Climate Action Strategies



A. Embrace the Future of Transportation in Maine



D. Grow Maine's Clean Energy Economy and Good Jobs



G. Invest in Climate-Ready Infrastructure



B. Modernize Maine's Buildings



E. Protect Maine's Environment and Working Lands and Waters, Increase Carbon Sequestration



H. Engage People and Communities in Climate Impacts and Program Opportunities



C. Reduce Carbon Emissions the Energy and Industrial Sectors through Clean Energy Innovation



F. Build Healthy and Resilient Communities



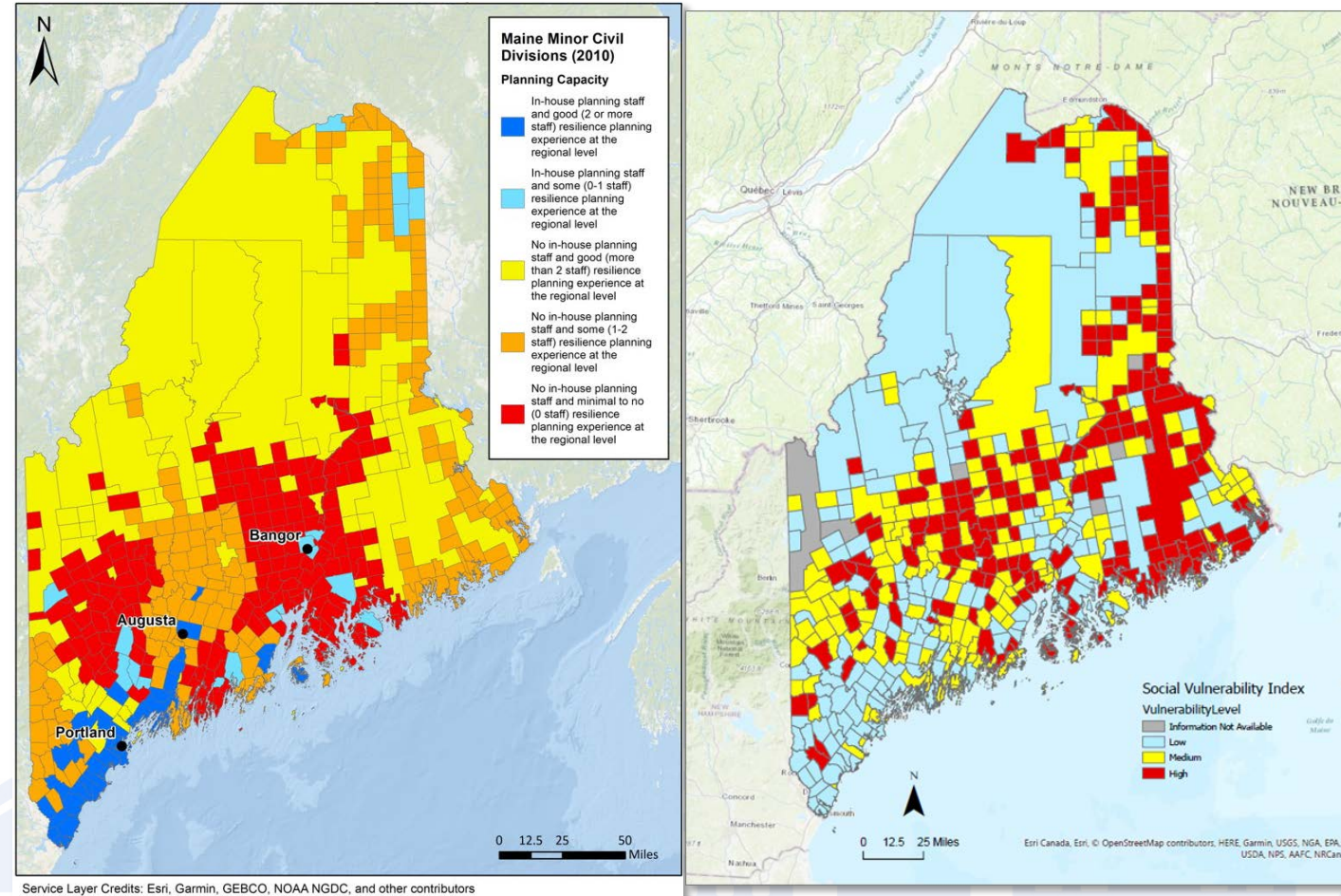
Community Resilience Partnership

www.maine.gov/future/climate/community-resilience-partnership

Purpose

Through grants and technical assistance, the Community Resilience Partnership assists communities to:

- reduce carbon emissions,
- transition to clean energy, and
- become more resilient to climate change effects such as to extreme weather, flooding, rising sea levels, public health impacts, and more.



Community Resilience Pilot Project (2021-2022)

3 regional cohorts & service providers:

Northern Region - Caribou, Fort Fairfield, Washburn

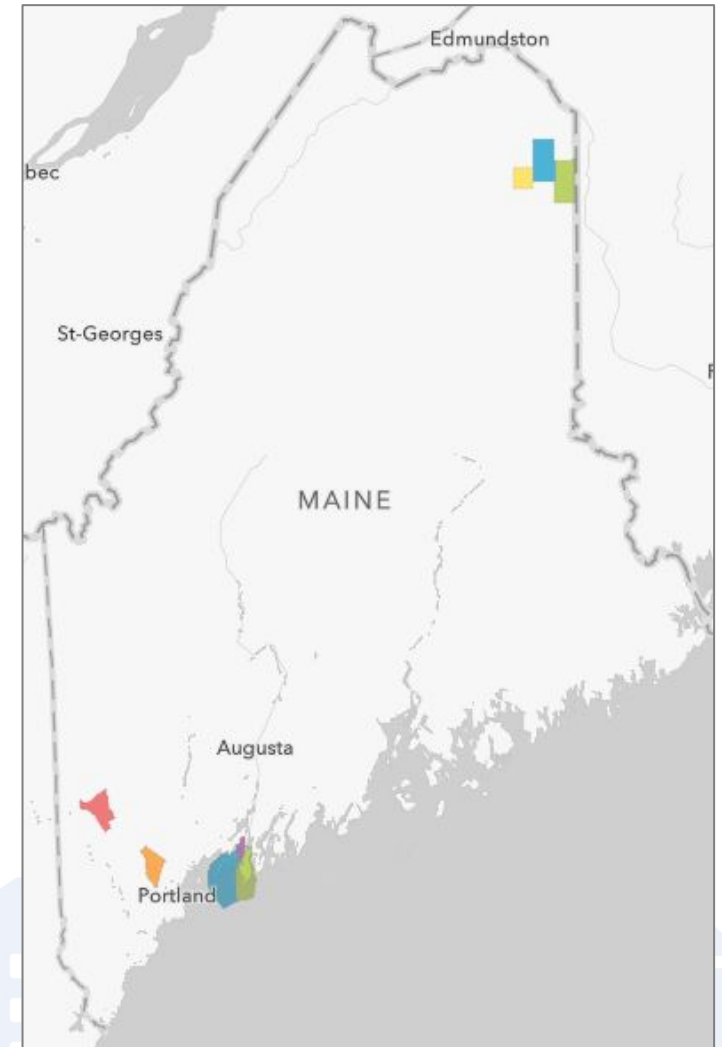
- Northern Maine Development Commission and The Nature Conservancy

Lakes Region - Bridgton, Windham

- Greater Portland Council of Governments

Coastal Region - Harpswell, Phippsburg, West Bath

- University of Southern Maine (New England Environmental Finance Center and Casco Bay Estuary Partnership)



Community/Regional Implementation Projects

Northern Region Tree plantings as windbreaks to reduce snow drifting on roadways

Lakes Region Developing resilience standards for municipal plans and policies

Coastal Region Sea level rise adaptation options for town landings





COMMUNITY
RESILIENCE  PARTNERSHIP



Community Resilience Partnership

\$4.75 million in the biennial budget for local, tribal, and regional grants to reduce carbon emissions and prepare for climate change impacts

3 types of funding opportunities

- **Grants to communities** for planning and implementation
- **Grants to service provider organizations** to help communities get started
- **Contracts with regional coordinators** to support communities in implementation and securing funding

COMMUNITY RESILIENCE PARTNERSHIP

To Join the Partnership:

Adopt
Resolution of Commitment

Complete
Pair of Self-Assessments

Hold
Community Workshop to
Prioritize Initial Climate Resilience
and Clean Energy Actions

Submit

- Enrollment form
- Documentation of enrollment criteria

Open enrollment, no deadline

If a community needs assistance enrolling, there are grants available to service providers to help them with enrollment and their action grant application.

Once Joined:

Congratulations!
Your community is
eligible for action grants

Apply
for a Community Action Grant

Applications are accepted
Twice a Year: March 22 &
September 20

To Maintain Active Status:

Every 2 Years:

- Reevaluate the pair of self-assessment
- Show evidence of progress



Community Action Grants (RFA)

Grants to communities for priority projects that reduce energy use and costs and/or make their community more resilient to climate change effects, such as flooding, extreme weather, drought, and public health impacts.

Intended outcomes:

Emissions reductions and improved community resilience.

Leveraging federal and other funds for larger projects.

Community Action Grants (RFA)

Two options:

Option 1 No-match grants for one or more activities on the **List of 72 Community Actions** that align with *Maine Won't Wait*

Option 2 Grants for other community priorities that support clean energy, emissions reduction, and community resilience projects

\$50,000 for individual communities

\$100,000 for multi-community proposals

Community Resilience Partnership		
List of Community Actions		
Revised December 1, 2021		
✓	Strategy Areas & Actions	Additional Resources (\$=funding source)
Strategy Area E: Protect the Environment & Promote Natural Climate Solutions		
Protect Natural and Working Lands and Waters		
E1	Set targets for increasing green space and tree planting to increase shade and water access in public spaces and carbon sequestration.	DACF Project Canopy (\$)
E2	Incorporate a goal into conservation plans of conserving 30% of land in the community by 2030 (including undeveloped town property), with a priority on addressing conservation gaps related to high biodiversity areas, undeveloped blocks, and land and water connectivity.	IWF: Beginning with Habitat
E3	Create or update a watershed plan to identify flooding and water quality priorities and adaptation options.	
E4	Develop a natural resource and habitat inventory that includes climate stressors and impacts.	ME Natural Areas Program: Maps, Data, and Technical Assistance
E5	Conserve, revegetate and reconnect floodplains and buffers in riparian areas.	
E6	Preserve climate-threatened natural areas such as wetlands, riparian areas, and headwater streams through zoning or other regulations.	
E7	Implement a source water protection program.	
E8	Adopt policies that prioritize natural, nature-based or ecologically enhanced shoreline protection for coastlines, rivers, and lakes.	
E9	Identify and protect sites for living shorelines and saltmarsh migration areas.	ME Natural Areas Program: Maps, Data, and Technical Assistance
E10	Identify and protect open space in the floodplain to increase flood buffers and community resilience.	ME Natural Areas Program: Maps, Data, and Technical Assistance
Strategy Area F: Build Healthy & Resilient Communities		
Plan for Community Resilience		
F1	Conduct a community vulnerability assessment that identifies climate risks and vulnerable populations and includes a review of existing plans and policies. Adopt a climate resilience plan that describes high priority strategies for reducing risk and vulnerabilities (may be a standalone plan or included in a comprehensive plan).	
F2	Update the local or county EMA hazard mitigation plan to address changing/future conditions and identify specific strategies to reduce	

Community Action Grants (RFA)

Equity

- Maine's climate response must ensure shared benefits across **diverse populations of people in Maine**.
- **Robust community engagement**, for example inclusive planning processes so that diverse community voices are able to participate.
- Applicants should consider the potential benefits of their proposed climate action projects and, if applicable, describe how the project **distributes benefits equitably**.

COMMUNITY RESILIENCE PARTNERSHIP

To Join the Partnership:

Adopt
Resolution of Commitment

Complete
Pair of Self-Assessments

Hold
Community Workshop to
Prioritize Initial Climate Resilience
and Clean Energy Actions

Submit

- Enrollment form
- Documentation of enrollment criteria

Open enrollment, no deadline

If a community needs assistance enrolling, there are grants available to service providers to help them with enrollment and their action grant application.

Once Joined:

Congratulations!
Your community is
eligible for action grants

Apply
for a Community Action Grant

Applications are accepted
Twice a Year: March 22 &
September 20

To Maintain Active Status:

Every 2 Years:

- Reevaluate the pair of self-assessment
- Show evidence of progress



maine.gov/future/climate/community-resilience-partnership

Service Provider Grants (RFA)

Grants to regional service providers who recruit groups of two to five communities to join the Partnership, conduct robust community engagement that sets priorities for implementing actions on the List of Community Actions, and apply for Community Action Grants and other funding opportunities to implement community energy and climate priorities.

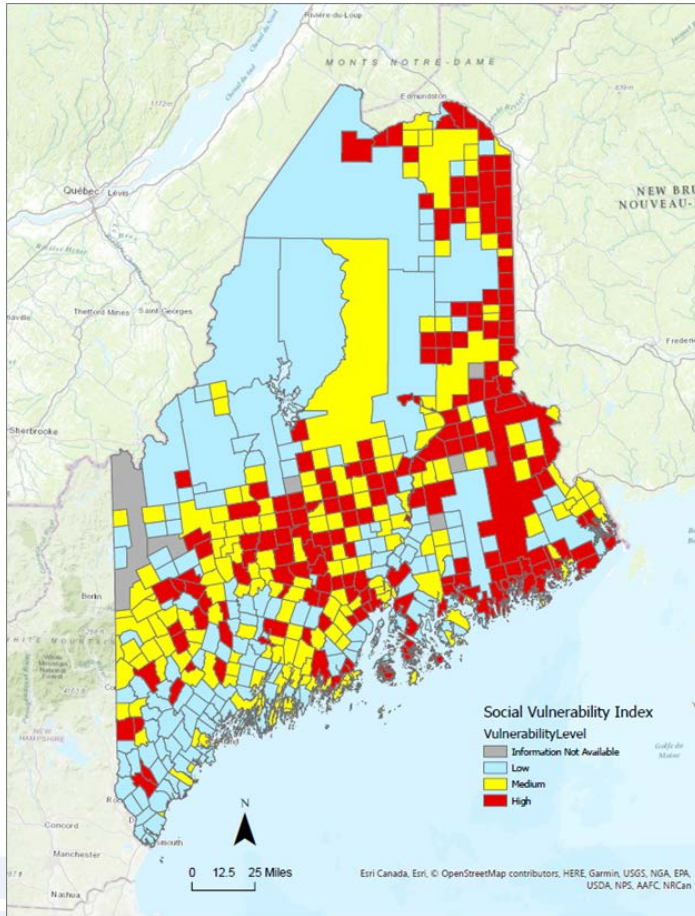
Intended outcomes:

New enrollments by 2-5 communities, including:

Lists of each community's priority projects and cooperative priorities.

Assistance to communities in applying for Community Action Grants.

Service Provider Grants (RFA)



Awards: Up to \$10,000 per community in the group

- An additional \$2,500 may be requested for each community with a population below 4,000 and for communities with high social vulnerability.

Intend to make at least one award in each region:

Region 1: York, Cumberland, Sagadahoc, Lincoln, and Knox Counties

Region 2: Waldo, Hancock, and Washington Counties

Region 3: Androscoggin, Oxford, Kennebec, Franklin, and Somerset Counties

Region 4: Piscataquis, Aroostook, and Penobscot Counties

Region 5: Federally recognized Tribes in Maine

COMMUNITY RESILIENCE PARTNERSHIP

To Join the Partnership:

Adopt
Resolution of Commitment

Complete
Pair of Self-Assessments

Hold
Community Workshop to
Prioritize Initial Climate Resilience
and Clean Energy Actions

Submit

- Enrollment form
- Documentation of enrollment criteria

Open enrollment, no deadline

If a community needs assistance enrolling, there are grants available to service providers to help them with enrollment and their action grant application.

Once Joined:

Congratulations!
Your community is
eligible for action grants

Apply
for a Community Action Grant

Applications are accepted
Twice a Year: March 22 &
September 20

To Maintain Active Status:

Every 2 Years:

- Reevaluate the pair of self-assessment
- Show evidence of progress



maine.gov/future/climate/community-resilience-partnership

Regional Coordinators Pilot (RFP)

This pilot complements the Service Provider and Community Action grants, with a focus on supporting communities and their service providers to fund and implement priority climate and energy projects.

Intended outcomes:

12-15 communities secure funding and other resources to implement emissions reductions and resilience projects

Regional Coordinators Pilot (RFP)

Awards: A one-time pilot with two-year funding, up to \$100,000 per year for two years.

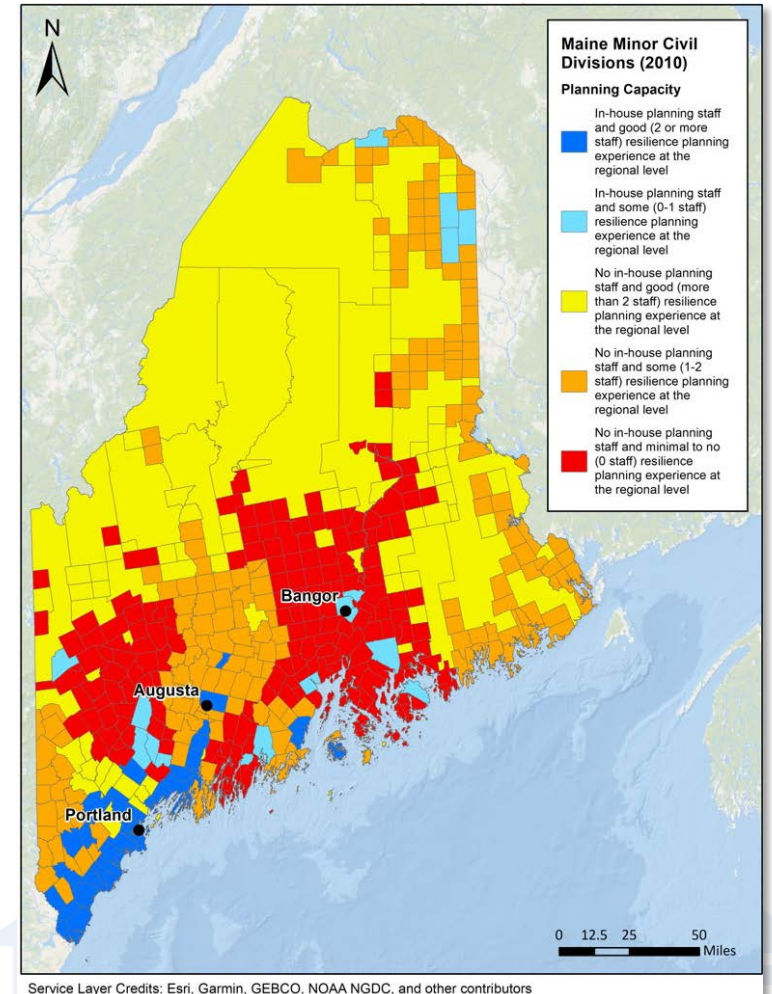
Regions

Region 1: York, Cumberland, Sagadahoc, Lincoln, and Knox Counties.

Region 2: Waldo, Hancock, and Washington Counties.

Region 3: Androscoggin, Oxford, Kennebec, Franklin, and Somerset Counties.

Region 4: Piscataquis, Aroostook, and Penobscot Counties.



Grant Deadlines

Community Action Grants

March 22 & September 20

Service Provider Grants

February 15 & August 16

Regional Coordinators Pilot

January 25

Website and Contact

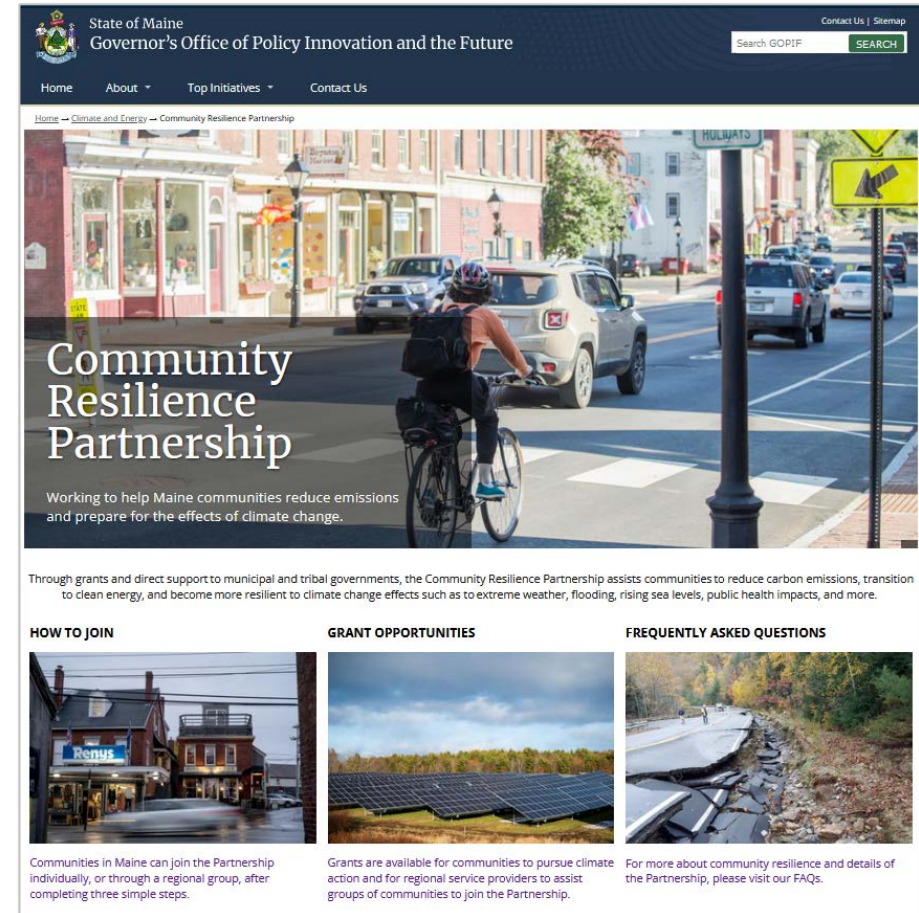
www.maine.gov/future/climate/community-resilience-partnership

- Joining the Partnership
- 3 program applications
- Frequently Asked Questions

Brian Ambrette

Senior Climate Resilience Coordinator

brian.ambrette@maine.gov



The screenshot shows the website for the State of Maine Governor's Office of Policy Innovation and the Future. The page is titled "Community Resilience Partnership" and features a large image of a person riding a bicycle on a city street. The text on the page reads: "Working to help Maine communities reduce emissions and prepare for the effects of climate change." Below this, there are three sections: "HOW TO JOIN", "GRANT OPPORTUNITIES", and "FREQUENTLY ASKED QUESTIONS". Each section has a small image and a brief description of the content.

State of Maine
Governor's Office of Policy Innovation and the Future

Home About Top Initiatives Contact Us

Home → Climate and Energy → Community Resilience Partnership

Community Resilience Partnership

Working to help Maine communities reduce emissions and prepare for the effects of climate change.

Through grants and direct support to municipal and tribal governments, the Community Resilience Partnership assists communities to reduce carbon emissions, transition to clean energy, and become more resilient to climate change effects such as to extreme weather, flooding, rising sea levels, public health impacts, and more.

HOW TO JOIN

Communities in Maine can join the Partnership individually, or through a regional group, after completing three simple steps.

GRANT OPPORTUNITIES

Grants are available for communities to pursue climate action and for regional service providers to assist groups of communities to join the Partnership.

FREQUENTLY ASKED QUESTIONS

For more about community resilience and details of the Partnership, please visit our FAQs.

Maine Infrastructure Adaptation Fund (Maine DOT)

www.maine.gov/mdot/grants/mjrp



Contact: [Maine Department of Transportation](http://www.maine.gov/mdot)

- **\$20 million** from the Maine Jobs & Recovery Plan
- Support local, regional, and state infrastructure projects that **address climate effects** and **support public safety**
- **Fill gaps** in existing infrastructure programs, not duplicating other grant programs
- Eligible projects include **scoping, design, implementation and construction**
- Encourage project designs that **consider future climate** projections

Thank You

www.maine.gov/future/climate/community-resilience-partnership

