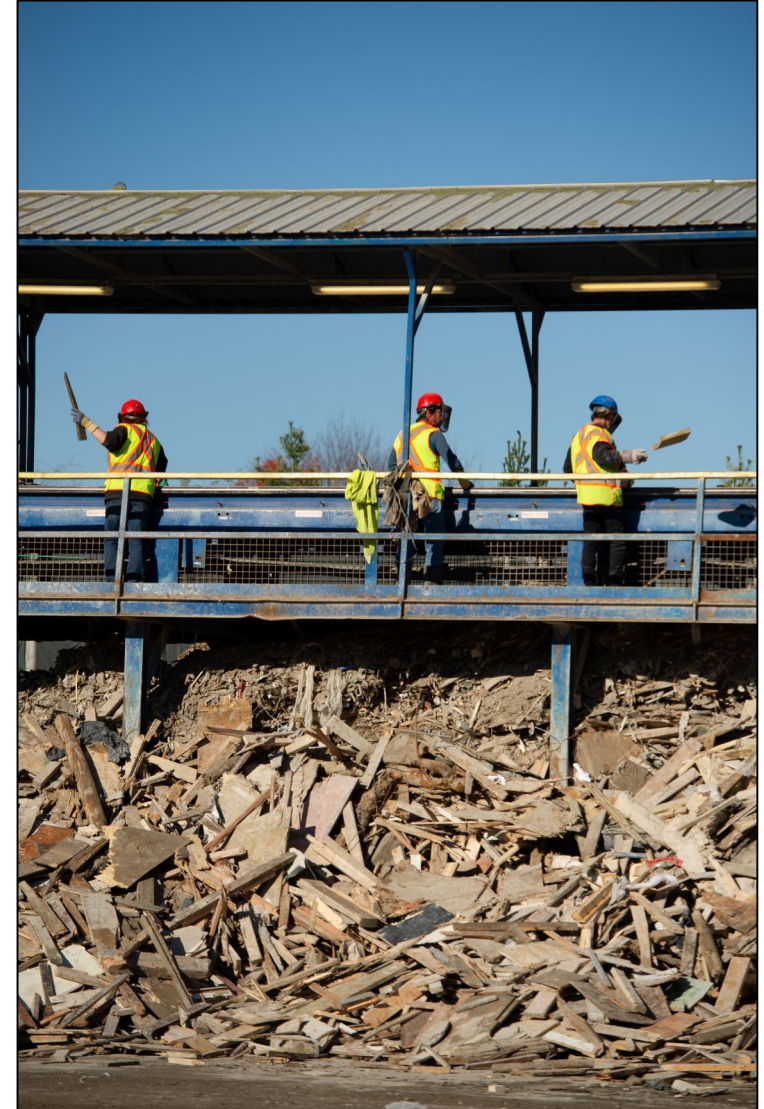




# Presentation to ENR Subcommittee

October 3, 2022

- New England's largest processor of construction and demolition (C&D) material
- An integrated network of five strategically located facilities in New England that process a wide variety of waste material and recover a high percentage of that material into high-quality end products for reuse
- Wholly owned by ReEnergy Holdings LLC, a renewable energy and waste services company based in Albany, NY
- Known for our commitment to safety and environmental compliance and for our innovative approach to material processing





- Maine's largest construction and demolition debris (CDD) processing facility
- Located at 38 Alfred A Plourde Parkway in Lewiston
- Approximately 40 full-time jobs, varying by season, and dozens more indirect jobs
- 179,000 tons processed in 2021, with approx. 60% of that material recycled, recovered or beneficially reused
- Personnel and equipment used to recover as much reusable product as possible that can be sold to end markets. Recovered materials can be used to for a wide variety of uses: fuel for electricity generation; medium-density fiberboard (MDF) manufacturing; asphalt paving; new cardboard and drywall; recycled plastic and metal products; and miscellaneous construction materials and soil substitutes.



- Integral part of state's solid waste management system
- Focus on health and safety and environmental compliance: As of Sept. 28, 2022, 582 days without a recordable injury
- Mission: To maximize the recycling and beneficial reuse of CDD and minimize landfilling through utilizing technology to increase recovery.
- Part of larger regional ecosystem for waste management and forest products sectors





- Free disposal of CDD material and oversized bulky waste to the City of Lewiston (in 2021, 1,069 tons of CDD and OBW from the City, including 2,131 mattresses)
- Lease payments to the South Park Development Corporation.
- Tax payments to City
- Total annual benefit to the City of Lewiston in direct payments and value of in-kind services has been as high as \$275,000.



## ~ \$2 million in new processing line to improve recovery rate

- Built Spring 2021; online Spring 2022
- Two new high-intensity magnets to increase the recovery of ferrous metals
- Eddy current separator to increase the recovery of non-ferrous metal
- Destoner to increase the recovery of asphalt, brick and concrete
- An additional picking line to allow for enhanced recovery of recycled materials such as wood, plastic and cardboard.



## Authorized Waste

### Mixed CDD:

- Treated & Untreated Wood
- Asphalt, Brick & Concrete
- Metal
- Insulation
- Wire
- Glass
- Drywall
- Cardboard
- Carpet
- Stumps

## Prohibited Waste

- Hazardous Waste
- Asbestos
- Contaminated Soils
- Sewage
- Liquid Waste
- Medical Waste
- Gaseous Waste





Inbound Waste  
(Primarily Mixed  
C&D)



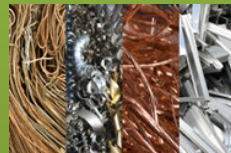
Strict controls in place to regulate waste flow and optimize processing

ReEnergy  
Proprietary  
Processing



Processing equipment includes:

- Picking stations
- Deck screeners
- Conveyor belts
- Magnets
- Eddy current
- Destoner
- Grinder



## Various Woods

Feedstock for medium density fiberboard manufacturing; low-cost, high BTU fuel for electricity generation

## Cover Chip

Road base in landfill; minimizes purchase of virgin materials

## Shingles

Road base in landfill; minimizes purchase of virgin materials

## Fines

Daily cover/shaping and grading in landfills; minimizes need to purchase soil

## Ferrous & Non-Ferrous Metals

Sale of metal to open market; value enhancement by advanced processing of ferrous and non-ferrous metals

## Asphalt Brick Concrete

Fill material used in roadwork





# Processed C&D Recycled Materials



**Wood Fuel**



**Unprocessed C&D**



**Ferrous (FRAG)**



**Non-Ferrous (Twitch)**



**Asphalt, Brick & Concrete (ABC)**







**Oversized Bulky Waste (OBW)**



**Unprocessed C&D**

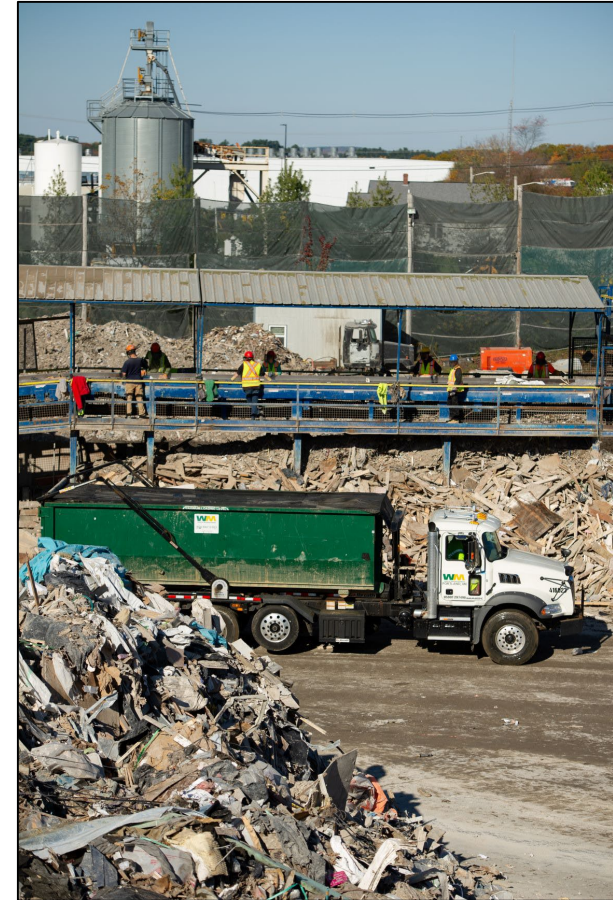


**Dirt Fines**



**Cover Chip**

- Relatively small regionally scattered volumes
- Transportation costs
- Lack of policy and financial incentives/consequences





## Influence the economics

Due to inflation and higher fuel costs, more in-state C&D waste has been accepted at ReSource Lewiston in recent months, particularly from the southern part of the state, as hauling the waste to Lewiston is less expensive than transporting it to landfills in Norridgewock and Old Town.

Consider methods to make this a lasting trend:

- Legislative requirements consistent with existing DEP objectives that 1) require the processing and recycling of C&D prior to disposal in landfill, and 2) includes incentives for municipalities and other consumers, such as:
  - Create cost advantages for recycled C&D in existing fee schedules
  - Grants to offset prohibitive transportation costs
  - Other?
- Consider programs that encourage innovation and investment in this sector
- Streamline approval processes for beneficially used materials/products that meet environmental and construction specs